

LeagueLine

2Q 2026

New Developments at New Jersey's Shopping Centers



PRESIDENT'S COLUMN



I started the year with a clavicle fracture and have spent the last eight weeks relying on a sling. A sling may look simple, but it provides essential support, stability, and relief, allowing the body to heal and regain strength.

While traveling to Washington, D.C., for the Leadership Summit in February with Cheryl Frothgill, President Elect, that idea stayed with me. Just as a sling supports recovery, our members support the strength, resilience, and future of our profession. When volunteers from AIA across the country traveled to our nation's capital to speak with Senators and Representatives about issues such as the high-performance building innovation tax credit, affordable housing, and design freedom, they offered the stability and leverage we needed to make our voices heard.

Engaged members are the backbone of our advocacy work. Without them, our profession cannot maintain the momentum required to champion the issues that matter most. I am proud to share that the volunteers representing New Jersey did an exceptional job during Hill Day, reflecting the dedication and spirit that define our community.

After the installation dinner was cancelled due to the state of emergency declared before the January snowstorm, Jessica O'Donnell, President of AIA New Jersey,

installed the new board at the February board meeting. Following an exciting round of Code Jeopardy, Service Awards were also presented to several ALNNJ members.

This year's board has planned many exciting events, beginning with our March Happy Hour, the 2025 Design Awards presentation, and a special tour of Bluview.

In April, we look forward to an exclusive tour of the WTC Rebuilding Gallery and Artist Studios at 3 World Trade Center, as well as a BehindtheScenes Tour of LEGOLAND New York.

We are also honored to welcome the 2026 AIA President, Illya Azaroff, FAIA, as the keynote speaker at this year's Expo in May. This joint event with AIA Newark & Suburban Architects introduces a refreshed format, with seminars designed for both firm leaders and staff.

We conclude the first half of the year with the Scholarship Awards Presentation and a tour of Hinchliffe Stadium in June.

As we move into a year filled with opportunity, growth, and renewed connection, I encourage you to join us. Experience firsthand the dedication, creativity, and passion of our volunteers and consider becoming part of that support system. Whether you contribute time, expertise, or enthusiasm, your involvement strengthens our collective impact and helps shape the future of our profession.

Eric Lam, AIA
2026 President



THE ARCHITECTS LEAGUE
OF NORTHERN NEW JERSEY

ERIC N. LAM, AIA
PRESIDENT

CHERYL M. FOTHERGILL, AIA
PRESIDENT-ELECT

MANUEL J. PEREIRAS, AIA
VICE PRESIDENT

LOURDES B. MELARTI, AIA
TREASURER

GARIMA KAUSHAL, AIA
SECRETARY

CHRIS BRAND, AIA
PAST PRESIDENT

TRUSTEES 2026

ANNA H. CHANG, ASSOC. AIA
JOSEPH E. DAVID, AIA
CHRISTOPHER O. DOUGHERTY, AIA
CHRISTOPHER A. HENRICKSON, AIA
FAY W. LOGAN, AIA
WILLIAM J. MARTIN, AIA
SAVITA S. NAYAK, AIA
SEAN J. VAN, AIA

Leagueline

Leagueline is also available online:
www.alnnj.org

NEWSLETTER COMMITTEE

ANTHONY IOVINO, AIA
EDITOR
aiovino@aiaarchs.com

FAY WILLIAM LOGAN, AIA
EDITOR / ADVERTISING COORDINATOR
faywlogan.aia@gmail.com

TODD HAUSE, AIA
EDITOR
toddmhause@gmail.com

ERIC LAM, AIA
EDITOR
eric.lam@redwoodsa.com

RALPH ROSENBERG, AIA
EDITOR
rosenbergr@nkarchitects.com

IJ KIM, AIA
EDITOR
ijkim@ijkimarchitect.com

LAUREN MARSIGLIA
GRAPHIC DESIGN & PROJECT MANAGEMENT
lmarsiglia25@gmail.com

New Developments at New Jersey's Shopping Centers



Leagueline 2Q 2026
Todd Hause, AIA
Ralph Rosenberg, AIA
Editors

About a year ago, I was in Livingston one weekend, and on a whim paid a visit to the Livingston Mall, which I had not been to since the 1980s. What I found was not the bustling suburban mall of my high school years, but a mere shadow of its former self, about 25% occupied, and on the verge of closing for good. Curious, I poked around and discovered that Livingston had declared its namesake mall an area in need of redevelopment and invited the public to comment on its future before deciding how to move forward. I was also interested to find that New Jersey is considering legislation to fast-track the redevelopment of such properties, or “stranded assets”.

Soon after, I began to notice a number of press releases announcing the redevelopment of other malls, some of which did not seem to particularly suffering from a lack of shoppers. In particular, I was surprised to see the Westfield Garden State Plaza and the Bergen Town Center, both located in Paramus on the list, but news has been coming in from all corners of the state. Like the proposals for the Livingston Mall, these redevelopments aim for mixed uses, especially including housing.

A short list of malls that have announced plans for, or have begun re-development work include; the Route 206 Mall, Brunswick Square Mall, Bergen Town Center, Monmouth Mall, Voorhees Town Center, Westfield Garden State Plaza, Moorestown Mall, and the Livingston Mall.

The reasons behind this emerging trend are: a desire for denser and more walkable neighborhoods; continuing concerns regarding the availability of affordable housing, combined with recent legislation by the State to address that issue, and a willingness by the owners of the malls to add value to their properties. In this issue of the Leagueline, we will look at these factors, the type and substance of the re-developments, and the challenges and opportunities that they create.

A new NEW URBANISM is Coming

By Ralph Rosenberg, AIA

New Urbanism is a planning and development approach grounded in principles that have shaped cities and towns for centuries: walkable blocks and streets, housing and shopping in close proximity, and accessible public outdoor spaces. It emphasizes the design of human-scaled, pedestrian-oriented, walkable, mixed-use neighborhoods.

These principles, articulated in the Charter of the New Urbanism (<http://cnu.org/who-we-are/charter-new-urbanism>), were developed to offer alternatives to the sprawling, single-use, low-density patterns that emerged in post-World War II development. Historically, rising housing demand fueled suburban growth farther from city centers, increasing automobile dependence and necessitating the construction of extensive highways, parking lots, and shopping centers—often at the expense of traditional downtown main streets.



Proposed main street at Westfield Garden State Plaza

Recognition of the need to slow this international pattern of sprawl first emerged at the Congress for the New Urbanism's inaugural assembly of scholars, architects, planners, and urban designers in Alexandria, Virginia, in 1993. Soon thereafter, the first draft of the design and development principles that would become the CHARTER OF THE NEW URBANISM was developed and formally ratified in 1996 with all 266 signatures. The Charter became the official guiding document of the **Congress for the New Urbanism** and is applicable to projects at all scales, from new developments to urban infill and the revitalization of existing suburban neighborhoods.

The Charter's mission is to champion walkable urbanism and provide resources, education, and technical assistance to create socially just, economically robust, environmentally resilient, and people-centered places. New Urbanism leverages the integration of design and social principles to advance three key goals: diversifying neighborhoods, designing for climate change, and legalizing walkable places. **"We build places people love."**

Several of the guiding principles and goals outlined in the Charter are shared by the redevelopment plans examined in the case studies that follow:

- The return of human-scaled, walkable, mixed-use communities
- A design priority for placemaking architecture and high-quality public spaces
- A holistic approach that embraces environmental sustainability

Locally, the three largest malls in Paramus — **Westfield Garden State Plaza**, **Paramus Park Mall**, and **The Bergen Town Center** and **The Livingston Mall** in Livingston—are all slated and approved for redevelopment. New Jersey, like many other states and regions, is experiencing a paradigm shift in consumer shopping habits that has contributed to the decline in popularity of suburban shopping malls and big-box retail.

In response, property owners have been compelled to reevaluate the underutilized assets of expansive parking fields surrounding these malls. When combined with the region's ongoing housing shortage, multifamily residential redevelopment emerged as the preferred strategy across all three sites.

However, delivering something more than luxury housing alone became a shared priority. There was broad consensus on the importance of creating vibrant, mixed-use, walkable neighborhoods that extend directly to the doors of existing shopping centers, fostering a mutually beneficial synergy between residential and retail uses. An additional benefit of this approach is the reduction of the environmental and visual blight created by vast, underutilized surface parking lots—an outcome well aligned with the core principles of **New Urbanism** planning.

PARAMUS PARK MALL



Satellite View of Vermella Paramas, Paramus Park Mall



Rendering by Minno & Wasko Architects and Planners Courtesy of Russo Development

Currently under construction and anticipated to open in Fall 2026, Russo Development will deliver 260 luxury residential apartments on roughly 60,000 s.f. of existing underutilized mall parking. The development consists of two five-story mixed-use buildings that will accommodate a mix of one- and two-bedroom units, with an appropriate allocation of affordable apartments. Located north of the Macy's department store, it will include approximately 8,000 square feet of independent ground-floor retail, designed to improve pedestrian connectivity to the new 372-bed Valley Hospital facility, as well as the surrounding commercial areas along From Road and Winters Avenue.

The development will be another Vermella Community, one of Russo Development's signature luxury apartment brands, designed in collaboration with Minno and Wasko Architects. It will represent the company's fourth Bergen County project, joining The Print House in Hackensack.

Adjacent to Vermella, Russo Development is also constructing their new corporate headquarters for a move from Carlstadt to Paramus. Located on From Road and on previous shopping mall parking, the new 45,000 s.f., 3 story building will be the new home of the company's growing personnel and portfolio. Bringing forward another important pedestrian mixed-use principle reducing suburban mall parking blight.

THE BERGEN TOWN CENTER



Satellite View of The Bergen Town Center Redevelopment, Paramus

Following completion of the Paramus Park Mall project, Russo Development, LLC and KRE Group will begin another mixed-use redevelopment adjacent to Bergen Town Center Mall. Urban Edge Properties, the owner of the mall, recently sold a large parcel along Forest Avenue and Route 4 East, with the assistance of JLL, for the development of a new 426-unit multi-family community. The project will consist of two buildings constructed in two phases, rising four stories above structured parking and approximately 5,000 square feet of independent retail space. Phase one of its construction will include 166 units, and phase two will comprise another 260 units.

The existing bridge over Forest Avenue will provide an essential pedestrian connection to Bergen Town Center's amenities with many shopping and dining choices. Concurrent to the new development, the BTC mall is entertaining plans to renovate and enhance the pedestrian friendliness and establish a cohesive placemaking identity for both destinations.

WESTFIELD GARDEN STATE PLAZA



An overhead of the potential future at Westfield Garden State Plaza in Paramus. Rendering courtesy of Westfield.



Rendering courtesy of Westfield

After years of planning, Westfield Garden State Plaza—owned by Unibail-Rodamco-Westfield has broken ground on a new mixed-use community adjacent to the existing mall, which originally opened in 1957. Located at the intersection of Routes 4 and 17 in Paramus, the development will create and establish a new central green that will serve as a recreation hub for the town and community. It will have a dedicated one acre open public square and a street network that would promote and encourage pedestrian connectivity and access to the mall amenities. Sustainability practices will be incorporated with renewable energy, natural materials and increased access to public transportation. The heat island effect of the underutilized surface lots will be reduced dramatically with this new development and a landscape plan incorporating current storm water management practices.

Developed in partnership with Mill Creek Residential, the first phase will include approximately 550 luxury apartment homes in a mix of one-, two-, and three-bedroom units. Buildings will rise five stories, with four levels of residential space above main street retail-commercial uses and covered parking. It was designed as a Multi-Generational Living community for all age groups to foster diverse social exchange.

THE LIVINGSTON MALL



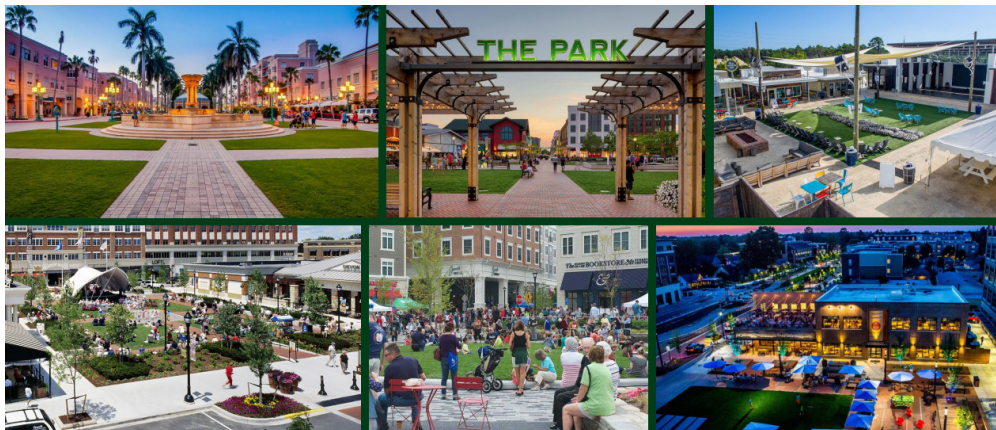
Opened in 1972, the Livingston Mall occupies approximately 60 acres along Eisenhower Parkway and South Orange Avenue in Livingston, New Jersey. The 1.15 million s of retail space has endured for more than five decades and has faced increasing challenges with an increasingly high vacancy rate driven by the rise of e-commerce, evolving consumer preferences, and the impacts of the COVID-19 pandemic.

In October 2024, the Township of Livingston accepted the recommendations of TOPOLOGY's preliminary investigation report and designated the Livingston Mall as an Area in Need of Redevelopment. To initiate a new chapter for the site, TOPOLOGY facilitated a multi-day community charrette aimed at developing a shared, community-led vision for the mall's future. The 5 day charrette process invited community stakeholders to a collaborative design process, attracting

residents, shoppers, professionals and public agency representatives. It embraced an iterative process to develop a plan framework, refine layouts, uses and designs to ultimately present an illustrative plan for the Livingston Mall's property. Objectives were based on delivering a Master Plan road map for a successful new pedestrian based mixed use community. It was to included several housing varieties, commercial and retail space, common greens and safe walkable vibrant streets.

While the charette lasted less than a week, months of planning went into making it a success. To create a comprehensive and high-quality process, TOPOLOGY brought in a financial analyst to vet and inform development schemes, as well as the designers and charette organizers at COMMON GROUND. TOPOLOGY also worked closely with the Township's communications team to prepare, publish, and advertise public communications in advance of the charette week.

The project remains on-going to develop a regulatory plan for the site as the project team works to address outstanding questions and considerations from the charette week and work with property owners in response to the community's vision of a mixed-use community development.



Precedent studies of scaled overlays of established downtowns.

Precedent images of Open Town Squares

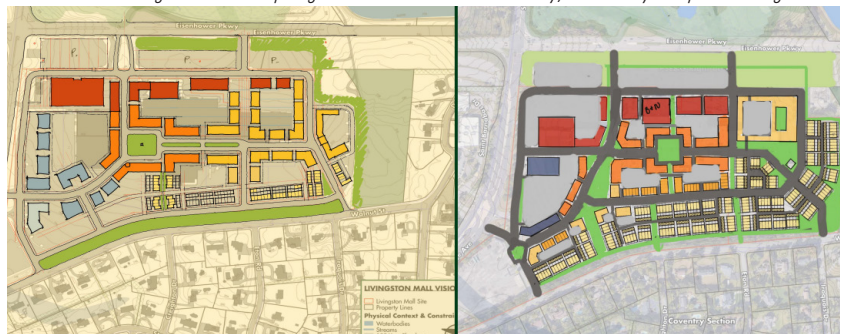


Ridgewood, N.J.



Westfield, N.J.

Iterative design exercises helped ground discussions about density, walkability and placemaking.



The 5 day charette process invited community stakeholders to a collaborative design process including residents, professionals, public safety, students and commercial investors.

A final concept plan was produced and presented to all at the end of the 5 day workshop reflecting a successful collaboration process. Key urban planning concepts were held that delivered a vision and road map for the Township that would be used for redevelopment guidelines moving the project forward. They included:

- A mixed use residential neighborhood that maintained appropriate zones for commercial and housing varieties.
- Shielded parking fields behind structures away from celebrated safe pedestrian Main Streets.
- Creation of a Public Town Square central to the community.
- Recreation open outdoor parks with a sustainable storm water management system.



Visionary rendering courtesy of TOPOLOGY and COMMON GROUND.



Visionary rendering courtesy of TOPOLOGY and COMMON GROUND Planners and Consultants

TOPOLOGY is a planning and consulting firm in Newark, NJ with a large successful portfolio of many municipality and redevelopment projects across the state.

Final Thoughts

By Todd Hause, AIA

A review of new articles from around the country shows that the transformation of malls into multi-use centers is a national trend and not just happening here in New Jersey. The combination of housing with retail strip development is also not particularly new; for the past 20 years, developers have been building such pairings, exemplified by City Place on River Road in Edgewater. What is new about the current trend is the transformation of malls, originally conceived and built as single-use spaces, into centers that contain diverse uses, including housing, and which can start to shift and redefine our existing communities more broadly.

The recently adopted State Development Plan acknowledges the inability of traditional single-use, low-density zoning, often excluding anything other than single-family homes to meet New Jersey's housing needs. On the other side of the equation, traditional city centers have also not kept pace with housing needs. What is left, other than sprawling-out housing developments to the horizon, may be to look at our malls and other previously developed but single-use spaces, as the best location for our un-met housing needs.


Interestingly, the State Plan proposes that future growth be concentrated in already developed areas, mirroring the recent developments at the malls. In Paramus, the concentration along the NJ-17 corridor seems to be hinting at a linear city.

In all, the transformation of our shopping malls represents an important and exciting prospect for the future of our communities to be reshaped into places that best fit our evolving needs and desires. Personally, I feel that providing infill redevelopment can have a positive impact by providing properly concentrated townscapes and reducing the need or desire to sprawl.

2026 ALNNJ BUDGET

INCOME		EXPENSES			
AIA NJ Revenue Share	\$ 10,990.00	Administration	\$ 40,000.00	Miscellaneous	\$ 700.00
Allied Membership Dues	\$ 1,000.00	Arthur Davis Lecture	\$ 1,500.00	National Convention (1 person)	\$ 4,000.00
Design Awards	\$ 600.00	Associate Development	\$ -	NJPAC	\$ 1,000.00
Dinner Meeting Guest Fees	\$ 850.00	Board and Merch	\$ 750.00	Professional Services	\$ 750.00
Fundraisers	\$ 3,250.00	Commissions - Sponsors	\$ 3,100.00	Reserve	\$ 5,000.00
Happy Hour Guest Fees	\$ 350.00	Communication	\$ 2,000.00	Scholarship-Diana & Ben Lee	\$ -
Installation Dinner	\$ 6,500.00	Design Awards	\$ 500.00	\$2500 (funded separately)	
Interest Income - CDs	\$ 2,600.00	Dinner Meetings	\$ 20,000.00	Scholarships - Students	\$ 8,000.00
Leagueline Ads	\$ 4,000.00	Fundraising	\$ 500.00	Special Events	\$ 500.00
Membership Dues	\$ 57,010.00	Happy Hour	\$ 3,200.00	Storage Unit	\$ 1,700.00
Misc Scholarship Donations	\$ -	Hospitality	\$ 100.00	Trade Show Expenses	\$ 53,000.00
Miscellaneous	\$ -	Installation Dinner	\$ 7,750.00	Tri-States (1 person)	\$ 1,300.00
Special Events/Tours	\$ 1,200.00	Leadership Summit (2 persons)	\$ 3,500.00	Vegliante Award	\$ 500.00
Sponsorship Platinum (2)	\$ 10,000.00	League Office	\$ 2,700.00	Web Hosting -StarChapter	\$ 2,750.00
Sponsorship Gold (3)	\$ 9,000.00	Leagueline	\$ 20,000.00	Womans Leadership (1 person)	\$ 2,300.00
Sponsorship Silver (5)	\$ 10,000.00	Lecture Fees	\$ 500.00		
Sponsorship Bronze (10)	\$ 11,250.00			Total - Expenses	\$ 187,600.00
Trade Show	\$ 59,000.00				
Vegliante Award	\$ -				
Total - Income	\$ 187,600.00				


OVERALL - BUDGET TO ACTUAL			
Total - Income	\$ 187,600.00	Difference	\$ -
Total - Expenses	\$ (187,600.00)		



Moulding Design Guide

KUIKEN BROTHERS

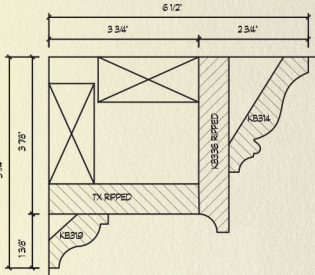
A MODERN PATTERN BOOK OF COMBINATIONS

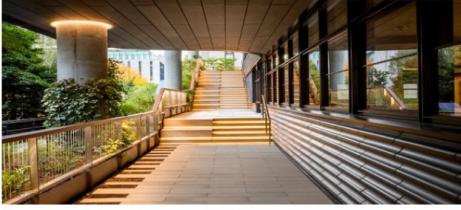


KUIKEN BROTHERS
COMPANY INC.
RESIDENTIAL & COMMERCIAL BUILDING MATERIALS
Since 1912

Visit [KuikenBrothers.com/MouldingDesignGuide](https://www.KuikenBrothers.com/MouldingDesignGuide)

DOWNLOAD CAD FILES





SLS NYC | 350 WEST 43RD ST PHA | NEW YORK, NY 10036 | 212.736.3700

SLS NJ | 44 PROSPECT ST SUITE #428 | MORRISTOWN, NJ 07960 | 908.691.9330

SLS
NEW JERSEY

SLS
NEW YORK CITY

SLS
CONTROLS

The lighting +
controls agency that
brings your vision to life



Explore
lighting +
controls



ELA + Synergy honors design intent,
streamlines support with fewer emails,
and delivers budget-conscious solutions.

So you can focus on creating, not chasing details.



Lutron's NY Global Experience
Center in NoMad

Thank you to our continuing sponsors.

We welcome new sponsors and offer the opportunity
to reach over 600 local architects with your products and
services in every issue of Leagueline.

Leagueline

The Architects League of Northern New Jersey
P.O. Box 152, Paramus, NJ 07653-0152

faywlogan.aia@gmail.com



Benjamin Moore®

Contact your local Architectural & Design Representative
Diana Rattazzi, Diana.Rattazzi@Benjaminmoore.com



Beautiful Outdoor Living.
We are Family Owned & Operated

Let us turn your outdoor space into your own oasis. We
handle each project with care, professionalism & open lines
of communication.

- Louvered Pergolas
- Fire & Water Features
- Full Landscape & Hardscape Build

In collaboration with architects and design professionals.

TruePatio.net | 201-396-2409

Events

2026 Leadership Summit

February 11-14, 2026

Eric Lam, ALNNJ President, and Cheryl Fothergill, ALNJ president-elect, attended the leadership summit in Washington, D.C. from February 11th to February 14th. On Hill Day, February 12th, members of AIA-NJ discussed several important topics with NJ Senators and Representatives. Among the topics were the 179-D High-Performance Building Tax Credit, Housing Legislation relating to affordable housing, Design Freedom, and Professional Designation and Student Loan Caps. Carole Wedge, CEO of AIA National, kicked off a day of seminars on February 13th, and the Keynote speaker was April Rinne, who talked about the 8 Superpowers for Thriving in Constant Changes.



Tour of BluView

March 11, 2026

A special event hosted by Esther Walter at The BluView site in S. Hackensack introduced the attendees to a new in situ technology which projects full sized plans and elevations from a designer's PDFs allowing for pre-construction walk-throughs and room simulations with props for the designer and client. This assists designers in solving the problem of clients not really understanding plans and the actual scale of proposed spaces. Esther and her company spoke of the technology and its' benefits to designers/clients in minimizing expensive revisions during actual construction.



February Meeting

February 19, 2026

Architects League of Northern New Jersey's first event of 2026 is at the Artistic Tiles Showroom in Paramus on February 19th. The event was attended by over 40 members. It was a fun-filled evening as Kip Howards and Joshua Brosz of Allegion hosted Code Jeopardy. In addition, the League's 2025 Service Awards were given out to the members who had dedicated their time and energy to the League. Among the recipients are Ben Lee, who received the Lifetime Achievement Award, and Fay Logan, who received the Anton Vegliante Award.



Happy Hour Q1

March 5, 2026

Members and guests gathered on March 5 at the Glen Rock Inn for an enjoyable evening of drinks, conversation, and camaraderie. Thank you to everyone who joined us. ALNNJ happy hours are always a special opportunity to strengthen friendships and connect with colleagues in the profession.



March Meeting & Design Awards Presentation

March 19, 2026

The March meeting was hosted at Reno's Appliance expansive Showroom in Patterson. We were treated to passed warm Hors D'oeuvres and great food and desserts prepared in the showroom. The ALNNJ 2025 Design Awards, which were reported in the 1Q issue, were given to the recipient firms after they presented their projects. The presentations were followed by a Q & A session with the firms' presenters.



New Members

- Urvi Basu, Assoc. AIA
- Maria Clara de Freitas, Assoc. AIA
- Dalira Floresca, AIA
- Steven Gallo, AIA
- Caroline Grieco, AIA
- Yan Huo, Assoc. AIA
- Charith Kombarana Basappa, Assoc. AIA
- Alex Lee, Assoc. AIA
- Danica Losino, AIA
- Ivelaw Mitchell, Assoc. AIA
- Chaitri Rathod, Assoc. AIA
- Marita Salmo, Assoc. AIA
- Matthew Testa, AIA
- Sai Sruthi Vojjola, Assoc. AIA
- James Winters, AIA
- Barry Wood, AIA

The Architects League looks forward to your involvement and participation. Please introduce yourself at the next live meeting or event.

Calendar

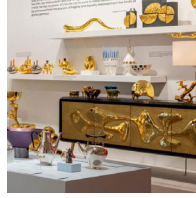
2Q April, May, June 2026



WTC Rebuilding Gallery and Artist Studios
Ultra-rare, private tour of the top 2 floors of the Richard Rogers' 3 World Trade Center from 12:00-1:30pm.
April 7, 2026
Visit alnj.org for up-to-date information



2026 Women's STEAM High School Architecture Tower Challenge
Designed to reach and engage underrepresented populations in our industry.
April 14, 2026
Visit alnj.org for up-to-date information



The Mad MAD World of Jonathan Adler
Invitation into the glamorous, witty, and wonderful universe of celebrated potter and designer Jonathan Adler.
thru April 19, 2026
Museum of Arts and Design
madmuseum.org



Robert Rauschenberg's New York: Pictures from the Real World
Rarely seen photos that reveal Rauschenberg's deep engagement with the real world and his complex relationship with NYC.
thru April 19, 2026
Museum of the City of New York
mcny.org



Open City Benefit
Tours, cocktails, dinner, and awards celebrating 25 years of Open House New York at 3 World Trade Center.
April 28, 2026
Open House New York
ohny.org



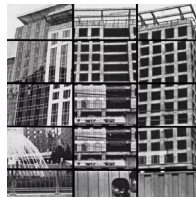
Brick by Brick
A Behind-the-Scenes Tour of LEGOLAND New York from 6-8pm.
April 29, 2026
Visit alnj.org for up-to-date information



The Occupied City: NY and the American Revolution
The 250th anniversary of the American Revolution. The entire 3rd floor transforms into a 7,000 sq. ft. immersive journey through Revolutionary-era New York.
May 1, 2026
Museum of the City of New York
mcny.org



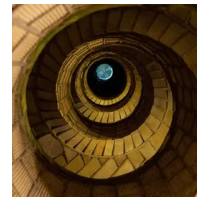
Robert Rauschenberg: Life Can't Be Stopped
Celebrating his 100th birthday. A tribute to his creativity & lasting impact on contemporary art.
thru May 3, 2026
Guggenheim
guggenheim.org



View Finding: Selections from The Walther Collection
Introduces his landmark gift of over 6,500 works & highlights the collection's pioneering point of view.
thru May 3, 2026
metmuseum.org
The Met



ALNNJ/AINs Expo '26
We revamped the schedule and added exciting new programming!
May 6, 2026
Visit alnj.org for up-to-date information



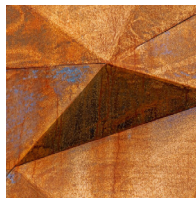
Vertical Tour at the Cathedral of St. John the Divine
Climb more than 124 ft. through spiral staircases to the top of the world's largest Gothic cathedral!
May 9, 2026
Cathedral of St. John the Divine
untappedcities.com



Oasis in the City
Brings together a variety of works that explore figurative and abstract forms, spanning the late 19th century to the present.
thru May 10, 2026
MoMa
moma.org



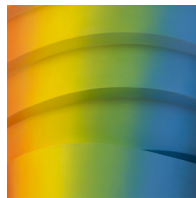
Viollet-le-Duc
The first major U.S. exhibition devoted to Eugène-Emmanuel Viollet-le-Duc (1814-1879), the visionary architect, designer, and theorist.
thru May 24, 2026
Bard Graduate Center
bgc.bard.edu



Common Ground: NJ Artists Think Monumental
New Jersey Arts Annual 2026. Transform the Museum's 8.4 acre campus into a dynamic landscape of contemporary art.
May 28, 2026
Morris Museum
morrismuseum.org



The Magical City: George Morrison's New York
Morrison's influence as an abstract expressionist painter began in 1943 when he traveled from rural Minnesota to New York City.
thru May 31, 2026
metmuseum.org
The Met



Guggenheim Pop
From Andy Warhol to Maurizio Cattelan, this exhibition features Pop art from the collection and its enduring influence on contemporary artists.
June 5, 2026
Guggenheim
guggenheim.org



Eileen Sackman

Eileen Sackman is a dedicated full-time wood fire potter and instructor based in New York's Hudson Valley. Eileen began wood firing nearly 25 years ago. She holds her MFA in Ceramics from SUNY New Paltz, a MA in Sculpture from Adelphi University, and a BA in Sculpture from Hunter College. Currently, Eileen serves as the ceramic instructor at Monmouth University, and she also teaches at The Art School at Old Church in Demarest, NJ. In addition to her teaching roles, Eileen has organized and curated both regional and national ceramic exhibitions. In December of 2024 Eileen published *Crafting Fire: A Contemporary Exploration of Traditional Iga Wood-firing*: in *Studio Potter Magazine*. Eileen has been a member of BAU Gallery since 2018 and served as the gallery's president for nearly 5 years and is currently serving as BUA Gallery's secretary and Chair of the exhibition committee.



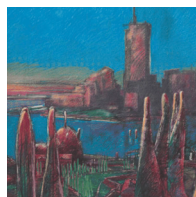
Eileensackmanceramics.com



Another Wonderland
Abram Champanier's Alice Mural - in collaboration with New York City Health + Hospitals Arts in Medicine and the Laurie M. Tisch Illumination Fund.
June 6, 2026
Museum of the City of New York
mcny.org



ALNNJ June Meeting: Hinchliffe Stadium
Featuring a tour of Hinchliffe Stadium led by Michael Hanrahan, FAIA.
June 18, 2026
Visit alnj.org for up-to-date information



People Cross Against the Light: Michael Sorokin's New York
Brings together 8 architectural projects Michael Sorokin (1948-2020) conceived for NYC, over a pivotal decade of his career.
thru June 26, 2026
Columbia GSAPP
arch.columbia.edu



JP Terlizzi: Remembering Eden
Presents a series of contemporary still-life photographs by NJ artist JP Terlizzi.
thru June 28, 2026
Montclair Art Museum
montclairartmuseum.org



Leagueline

The Architects League
of Northern New Jersey
P.O. Box 152
Paramus, NJ 07653-0152



Bringing Structural Innovation & Excellence to your Building Projects




- ◆ Structural Analysis & Design
- ◆ Condition Assessment Reports
- ◆ Historical Preservation
- ◆ Renovations & Additions
- ◆ Peer Review
- ◆ Value Engineering
- ◆ MEP Services
- ◆ Feasibility Studies
- ◆ Restoration of Existing Structures

825 Bloomfield Ave, Verona, NJ 07044
www.ksi-pe.com • P: 973.577.7739




See the *difference* a full-service roofing manufacturer can make.



Soren Pedersen
Northern NJ Territory Manager
spedersen@garlandind.com




Windows & Doors

Make Life BRIGHTER.

Innovative windows and doors that deliver exceptional beauty, performance and peace of mind.

Winner of Best of IBS award, it is the fastest wood window installation system with easy-to-learn components that help ensure a high-quality, consistent fit and finish every time.

(973) 575 - 0200
pro.pella.com

BEST OF IBS™ AWARDS 2024
WINNER BEST WINDOW & DOOR PRODUCT



Pella® Steady Set™
Interior Installation System